



2018年報

2018 Hsin Kuang Steel Charity  
Annual Report



# 目錄

## Table of Contents



### 序言

#### Preface

## 1

### 年度工作報告

#### Annual Work Report

- 新光鋼添澄慈善基金會  
Hsin Kuang Steel Tian-Cheng Charity Foundation
- 台北縣私立輝容社會福利慈善事業基金會  
Taipei County Private Hui Jung Welfare and Charity Foundation

## 2

### 活動報導

#### Activity Reports

- 人才培育及教育推廣  
Talent Development and Education Promotion
- 落實社區關懷  
Implement Community Care
- 建立醫療急救設施  
Establishment of Emergency Medical Equipment
- 其他  
Others

## 3

### 年報數據

#### Income and Expenditure Statistics

- 新光鋼添澄慈善基金會  
Hsin Kuang Steel Tian-Cheng Charity Foundation
- 台北縣私立輝容社會福利慈善事業基金會  
Taipei County Private Hui Jung Welfare and Charity Foundation

## 4

### 展望

#### Prospects



# 序言

## Preface



### 新光鋼添澄慈善基金會 Hsin Kuang Steel Tian-Cheng Charity Foundation

新光鋼添澄慈善基金會，係由粟明德董事長及張添澄創辦人抱持著「取之社會、用之社會」的初衷，藉由己私及企業力量，用以關注社會中被忽略的弱勢小眾，感念於此，故於民國九十八年年一月二十二日，由新光鋼鐵股份有限公司捐助新臺幣 2,000 萬元及添澄實業股份有限公司捐助新臺幣 1,000 萬元，共同成立。並由張添澄董事擔任此基金會董事長。

新光鋼添澄慈善基金會以從事社會急難救助、兒童及青少年教育福利、身心障礙救助、老人福利、清寒低收入補助及特殊醫療補助等多項社會慈善救助，以回饋社會善盡企業之責任。

自成立至今，新光鋼添澄慈善基金會捐助 11 台車輛（供緊急救護、復康及身障者就醫接駁使用），因體認緊急救護醫療之重要，持續捐贈救護車及相關救護設備予台北市、花蓮縣、新北市、台中市、新竹縣等縣市政府消防局，也捐贈嘉義聖母基金會

復康、沐浴醫療車、台北榮民總醫院及嘉義基督教醫院身障接駁專車、花蓮縣政府救災車…等，讓弱勢族群就醫更便利。

民國 107 年度捐助金額逾新台幣 677 萬元，自成立以來累計總捐助金額逾 3,943 萬元，捐助對象遍佈全台社福機構及弱勢的個人族群，持續捐助對象除上述緊急醫療外，涵蓋人才培育（在偏鄉國中開設會考衝刺班、國中小清寒學生學雜費補助 .. 等），落實社區關懷（在嘉義民雄開設老人食堂…等），扶助弱勢（慢飛天使 .. 等身障機構的物資捐助），醫療救助（汰換醫院救護儀器及清寒家庭就醫補助…）。

新光鋼添澄慈善基金會分別於民國 100 年及民國 103 年接受內政部及衛生福利部「全國性暨省級財團法人社會福利慈善事業基金會評鑑」獲評為「甲等」殊榮。





Hsin Kuang Steel Tian-Cheng Charity Foundation was established by the Chairman of the Board Alexander M.T.Su and the founder Trickle T.C.Chang based on the ideals of "prosper from the society and give back to the society". They seek to consolidate their own powers and those of the Company to pay attention to ignored and disadvantaged groups in the society. To this end, Hsin Kuang Steel Co., Ltd. donated NT\$20 million and Trickle Co., Ltd. donated NT\$10 million on January 22, 2009 for the establishment of the Foundation. The Director Trickle T.C.Chang serves as the Chairman of the Foundation.

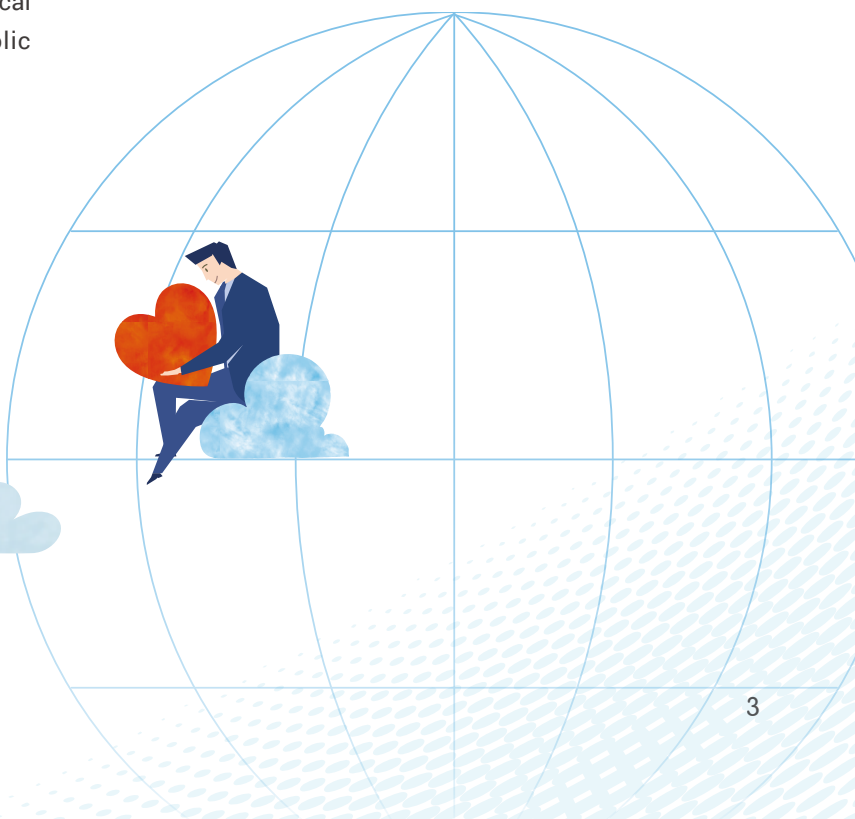
The Foundation contributes to social development and fulfills corporate social responsibilities by providing emergency social assistance, children and youth education welfare, assistance for the disabled, elderly welfare, subsidies for low-income individuals, special medical assistance, and other social charity assistance.

Since its establishment, Hsin Kuang Steel Tian-Cheng Charity Foundation has donated 11 vehicles (for emergency assistance, rehabilitation, and transport of disabled persons to hospitals). The Foundation recognizes the importance of emergency medical aid and it continues to donate ambulances and related equipment to fire departments in Taipei City, Hualien County, New Taipei City, Taichung City, and Hsinchu County. It also donated rehabilitation, shower medical vehicles for Sisters of Our Lady of China Catholic

Charity Social Welfare Foundation, shuttle vehicles for the disabled for Taipei Veterans General Hospital and Chia-Yi Christian Hospital, and Hualien County Government disaster relief vehicles, etc. to provide convenience for the disabled in seeking medical care.

The Foundation has donated NT\$6.77 million in 2018 and it has donated NT\$39.43 million since its establishment. The recipients included social welfare organizations and individual disadvantaged groups. Recipients of continuous donations include the aforementioned emergency medical services as well as talent development (intensive courses for the Comprehensive Assessment Program in remote junior high schools, subsidies for tuition fees for elementary and junior high school students from poor families etc.), community care (establishment of a cafeteria for the elderly in Minxiong Township in Chiayi etc.), assisting the disadvantaged (donation of supplies to the Flying Slow Angels and other institutions for the disabled), and donations to hospitals (replacement of medical equipment, subsidies for poor families etc.).

Hsin Kuang Steel Tian-Cheng Charity Foundation was evaluated in the "National and Provincial Social Welfare Charity Foundation Evaluation" by the Ministry of the Interior and the Ministry of Health and Welfare in 2011 and 2014 and was rated "Grade A".





## 輝容社會福利慈善事業基金會

Taipei County Private Hui Jung Welfare and Charity Foundation

輝容基金會成立於民國 92 年，由新光鋼鐵現任董事長粟明德先生、其胞妹粟清雲女士及輝容投資股份有限公司共同捐助現金新台幣 2,000 萬元而成立，目前基金已成長至近新台幣 5,800 萬元，主要從事兒童福利、老人福利、殘障福利、青少年福利、醫療福利及關懷生命...等相關捐助或活動贊助。

粟明德董事長於事業較穩固時成立輝容基金會，用來彌補其未能及時孝養父親之憾，也希望藉此延續對其父親之思念，化為大愛，回饋給社會上有需要幫助的人，同時落實「取之於社會，用之於社會」的本心。藉由輝容基金會的運作，粟董事長亦期許他的子女，能夠了解祖父當年創業的困苦，並體會為父後來守業的艱辛。期勉日後子女接掌事業時，亦能腳踏實地、兢兢業業，帶領團隊努力經營事業，並發揚光大且繼續實踐社會大愛。

自成立至今，輝容基金會已捐助 17 台車輛（供緊急救護、身障及山地醫療接駁使用），因深感緊

急救護醫療之重要，持續捐贈救護車及相關救護設備予高雄市、桃園市、新北市、台中市、彰化縣、嘉義縣、雲林縣、宜蘭縣、新竹縣等縣市政府消防局及台北醫學院附設醫院；捐贈羅東聖母醫院山地巡迴醫療車，嘉惠偏遠鄉鎮的人民；捐贈身障接駁車予香園教養院、鴻佳啟能庇護中心，讓弱勢族群就醫更便利。

107 年度捐助金額逾新台幣 918 萬元，自成立以來累計捐助金額逾 8,808 萬元，捐助對象除上述緊急醫療外，涵蓋人才培育（各級學校及社團引介的清寒學童，如世展會、芥菜種會、國軍遺孤及金陵女中...等）、社區關懷（原民舞蹈團、南澳金岳社區發展協會、犯罪被害人保護協會、台北市八頭里仁協會、中華天使兒童村協會...）、扶助弱勢（創世基金會、盲人協會、殘障協會、幼安教養院、聽語障協會、啟能中心個人的急難救助...等）及醫療救助（持續捐助醫療義診團隊，如：台灣路竹醫療和平會、台北醫學大學楓杏醫學青年服務團、清寒家庭就醫補助個案...等）。





Hui Jung Welfare and Charity Foundation was established in 2003 with a joint NT\$20 million donation from Hsin Kuang Steel's current Chairman Mr. Alexander M.T.Su, his younger sister Ching-Yun Su, and Hui Jung Investment Co., Ltd. The foundation has grown to nearly NT\$58 million and it mainly focuses on the welfare of children, the elderly, disabled, youth, medical welfare, and care for life as well as related donations or sponsorship for activities.

The Chairman Alexander M.T.Su established Hui Jung Welfare and Charity Foundation when his career stabilized to make up for the lost opportunity of taking care of his father. He hoped to extend his love for his father and transform it into a greater love to give back to those in need in the society while implementing the ideals of "prosper from the society and give back to the society". Through the operations of Hui Jung Welfare and Charity Foundation, the Chairman Mr. Su also hoped that his children can learn about the difficulties their grandfather had overcome when he founded the Company and understand the challenges of running the Company. He hopes that when his children will be honest and careful when they take over the Company and lead the team to work hard in the business while making things better and continuing to express greater love to society.

Since its establishment, Hui Jung Welfare and Charity Foundation has donated 17 vehicles (for emergency assistance and transport of disabled persons in mountain areas to hospitals). The Foundation recognizes the importance of emergency medical aid and it continues to donate ambulances and related equipment to fire departments in Kaohsiung

City, Taoyuan City, New Taipei City, Taichung City, Changhua County, Chiayi County, Yunlin County, Yilan County, and Hsinchu County as well as the Taipei Medical University Hospital. It also donated mobile medical care vehicles for mountain regions to St. Mary's Hospital Luodong to help people living in remote areas. The Foundation donated shuttle vehicles to Hsiang Yuan Memorial Institute and Hung-Chia Sanctuary for the Handicapped to make it easier for disadvantaged groups to receive medical treatment.

The Foundation donated more than NT\$9.18 million in 2018. The Foundation has donated more than NT\$88.08 million since its establishment and recipients of continuous donations include the aforementioned emergency medical services as well as institutions for talent development (poor students introduced by various schools and associations such as World Vision Foundation, the Mustard Seed Mission, orphans of Veterans, Ginling Girls' High School, etc.), community care (dance troupes of indigenous peoples, Nanao Jinyue Community Development Association, Association for Victims Support, Taipei Batou Liren Association, the Village of Angelic Children, etc.), assisting the disadvantaged (Genesis Social Welfare Foundation, Associations for the Blind, Associations for the disabled, orphanages, associations for people with hearing, linguistic disabilities, and mental disabilities, individual emergency relief, etc.), and medical assistance (continuous donations to volunteer medical care groups such as Taiwan Root Medical Peace Corps, Taipei Medical University Hospital Feng Hsin Medical Youth Service Group, and medical care subsidies for poor families).





1

# 年度工作報告

Annual Work Report





## 新光鋼添澄慈善基金會

### Hsin Kuang Steel Tian-Cheng Charity Foundation

#### 107 年度工作報告

107 年度新光鋼添澄慈善事業基金會依照年度工作計畫，投入各項社會福利、社會公益等服務方案，關懷弱勢學童、清寒低收入家庭、身心障礙和緊急救護、醫療補助，透過扶助關懷，陪伴受助者一起感受幸福，擁有實現夢想的能力。本會全年度支出總額為新臺幣 677 萬元整，茲就重大支出概況報告如下：

#### 2018 Annual Work Report

Hsin Kuang Steel Tian-Cheng Charity Foundation dedicated itself to various social welfare and charity service plans in 2018 in accordance with its annual work plan. It provided assistance for disadvantaged schoolchildren, low-income families, the disabled, emergency aid, and medical subsidies. Through assistance and care, it helps the assisted individuals experience happiness and gain the abilities for realizing their dreams. The Foundation's annual expenditures totaled NT\$6.77 million and the major expenditures are as follows:

## 社會福利活動

### Social Welfare Events



#### ● 兒童福利 Children's Welfare



基金會借助台灣行動菩薩助學協會在育華國小開辦課後輔導課程，幫助該校學童，提升學習能力。捐助美星教會在宜蘭縣三星鄉開辦弱勢學生平日課後輔導及寒暑假輔導及品德教育課程，防止孩子誤入歧途。長期捐助新北市萬里崁腳國小營養早餐計畫，照顧偏鄉孩童營養均衡，提升孩童學習專注力。

The Foundation opened assistance courses at Yuhua Elementary School with Taiwan Action Buddha Society to help schoolchildren at the school improve their studies. The Foundation made donations to Meixing Church for after-school courses, winter and summer vacation courses, and moral education courses in Sanxing Township in Yilan County to prevent children from making the wrong choices in their youth. The Foundation maintains long-term donations to the nutritious breakfast program for Kanjiao Elementary School in Wanli, New Taipei City to ensure that they receive balanced nutrition and improve the children's focus in their studies.



### ● 身心障礙者福利

#### Physically or Mentally Challenged Welfare

捐助收容身心障礙朋友的桃園「觀音愛心家園」，觀音愛心家園藉由教育身障人士練習自我進食、如廁、穿衣、盥洗等能力，對於有工作意願與能力者，培養其良好的工作態度，幫助訓練適合的工作技能，期盼他們能夠學會照顧自己。持續捐助腦麻兒童協會及台灣癲癇之友協會。

Guanyin King Garden Bakery in Taoyuan provides shelter for people with disabilities. Guanyin King Garden Bakery educates people with disabilities on how to feed themselves, use the bathroom, put on clothes, and maintain personal hygiene. For those willing to work and capable of work, they cultivate good work ethics and help train them in suitable work skills with the aim of letting them learn how to take care of themselves. The Foundation continues to donate to the Cerebral Palsy Association and the Taiwan Epilepsy Association.



### ● 急難救助

#### Emergency Aid



捐贈救災車乙部，供花蓮縣豐濱消防隊救災及天災時疏散鄉民使用。捐贈平頂救護車暨車內緊急救護配備予新竹縣消防局湖口分隊，汰換已屆齡除役的救護車。捐助 60 萬元響應桃園市府敬鵬工業公司大火殉職及公傷人員家屬撫恤專案。

The Foundation donated an emergency response vehicle for the Fire Department of Fengbin, Hualien for evacuating residents during disaster relief or natural disasters. The Foundation donated a regular ambulance complete with emergency aid equipment to the Hukou Branch of Hsinchu County Fire Bureau to replace an aged and decommissioned ambulance. The Foundation donated NT\$600,000 to compensation project fund for family members of the victims of the fire at Chin Poon Industrial in Taoyuan City.

### ● 醫療補助

#### Medical Subsidies

捐贈恆春醫院一台『血液氣體分析儀』，快速篩檢新生兒之檢體，讓新生兒疾病得到快速的診療。捐贈台東基督教醫院新生兒篩檢用的『黃疸測定儀』及使用 X 光輔助開刀時需穿著的『放射防護鉛衣及鉛頸圈組』。

The Foundation donated a "blood gas analyzer" to Hengchun Hospital to quickly screen samples taken from newborns so that newborn diseases can be quickly treated. The Foundation donated a "jaundice detector" used for screening newborns and a "radioactive lead shielding gear and lead thyroid collar set" required for using X-ray in image-guided surgeries to Taitung Christian Hospital.





## 輝容社會福利慈善事業基金會

### Taipei County Private Hui Jung Welfare and Charity Foundation

#### 107 年度工作報告

107 年度輝容社會福利慈善事業基金會依照工作計畫，投入各項社會福利、社會公益等服務方案，關懷弱勢學童、經濟弱勢家庭、身心障礙和緊急救護、醫療補助，透過扶助關懷，陪伴受助者一起感受幸福，擁有實現夢想的能力。本會全年度支出總額為新臺幣 918 萬元整，茲就重大支出概況報告如下：

#### 2018 Annual Work Report

Hui Jung Welfare and Charity Foundation dedicated itself to various social welfare and charity service plans in 2018 in accordance with its annual work plan. It provided assistance for disadvantaged schoolchildren, economically disadvantaged families, the disabled, emergency aid, and medical subsidies. Through assistance and care, it helps the assisted individuals experience happiness and gain the abilities for realizing their dreams. The Foundation's annual expenditures totaled NT\$9.18 million and the major expenditures are as follows:

## 社會福利活動 Social Welfare Events



#### ● 兒童福利 Children's Welfare



捐助台東豐田少棒球隊的日常運作及國外參賽的經費。透過世展會『資助兒童計畫』，資助國內弱勢學童就學，從早期的 10 位學童到現今的 22 位學童。持續透過基督教芥菜種會每年認養花蓮、屏東、南投等偏遠地區貧困家庭的兒童共 9 名。捐助行動菩薩助學協會在彰化縣二林鎮中興國小開辦低年級免費課後輔導課程。

The Foundation donated funds to Fengtien Little League Baseball Team in Taitung for daily operations and participation in matches in foreign countries. The Foundation provided funding to disadvantaged schoolchildren in the country through the World Vision "Sponsor a Child" project. The Foundation started by sponsoring ten schoolchildren and now supports 22 schoolchildren. The Foundation continues to sponsor 9 children from poor families in remote areas in Hualien, Pingtung, and Nantou through the Mustard Seed Mission. The Foundation supported Taiwan Action Buddha Society in providing free after-school assistance courses for younger students of Zhongxing Elementary School of Erlin Township, Changhua County.



## ● 身心障礙者福利

### Physically or Mentally Challenged Welfare

捐助苗栗幼安教養院 5 位家人無力照顧，且家庭經濟不穩定之重度智障（閉障）託育院生的養護費用；捐助桃園祥育啟智教養院興建院舍費。捐助創世基金會年終寒士吃飽活動及雲林聽語障協會三節發送予低收清寒居民日常生活物資活動。另響應台東清寒植物人在地安養需求，捐贈擴建創世基金會台東分院經費。

The Foundation donated care-giving fees for 5 residents of Yu An Retarded Children's Home in Miaoli who suffer from unstable economic support from families and severe retardation (autism). The Foundation donated fees for the construction of residences at Hsiang Yu Home for Retarded Children in Taoyuan. The Foundation sponsored the Genesis Social Welfare Foundation's Feast for the Disadvantaged event and Yunlin County Welfare Association of the Deaf in its donations of daily supply to poor residents on the three Chinese holidays. The Foundation also responded to local care-giving needs for economically-challenged individuals in vegetative state in Taitung and donated funds for the expansion of Genesis Social Welfare Foundation's Taitung Branch.



## ● 急難救助

### Emergency Aid



桃竹苗及新竹尖石、南投信義等偏遠鄉鎮，因地處偏遠謀生不易，年輕人出外打拼，留在村落的老人、小孩無人照顧，基金會深入該鄉鎮，接受實際需要的個案申請急難救助，民國 107 年共計有 118 人次申請，由基金會提供小額急難救助金，暫渡困境。

In remote country regions in Taoyuan, Hsinchu, and Miaoli, particularly Jianshi in Hsinchu and Xinyi in Nantou, the remoteness of such regions makes it difficult to find a job and young people are required to leave their homes to find work. The elderly and children left in the villages have no one to take care of them. The Foundation ventured into the remote areas and accepted applications for emergency relief. 118 individuals filed applications in 2018 and the Foundation provided small amounts of emergency relief funds to help them in times of need.

## ● 緊急救護、醫療補助

### Emergency Medical Assistance and Medical Subsidies

新竹縣政府消防局新埔分隊救護車已屆汰換年限，基金會捐贈一部全配的平頂救護車予新埔分隊。民國 107 年下半年捐助台灣路竹醫療和平會雲南義診活動部份經費。捐助台北醫學大學楓杏醫學青年服務團每年暑假的澎湖義診暨醫療暨醫學知識推廣服務，內容含蓋醫療巡迴、國小醫學體驗營及高中醫學知識計畫。

An ambulance of Xinpu Branch of Hsinchu County Fire Bureau has reached retirement age and the Foundation donated a regular ambulance complete with equipment to Xinpu Branch. The Foundation provided funding for parts of the volunteer medical services provided by Taiwan Root Medical Peace Corps in the second half of 2018. The Foundation made donations to the Taipei Medical University Hospital Feng Hsin Medical Youth Service Group for its annual voluntary medical services and healthcare and health science promotion services in Penghu in summer. The event included medical service tours, medical experience camps in elementary schools, and medical knowledge programs for high schools.





### ● 清寒獎助學金 Scholarships for the Poor

上下學期各捐助 4 位金陵女中學生清寒獎助學金，減輕清寒學生家庭的經濟重擔。透過宜蘭縣弘德愛心協會頒發低收入優秀子女獎學金，民國 107 年共頒發高中（職）學生 31 名、大專以上學生 12 名，共計 43 名獎助學金。

The Foundation made donations for scholarships for 4 poor students of Ginling Girls' High School in the first and second semester to alleviate the economic burdens of students from poor families. The Foundation provided scholarships to high-achieving students from low-income families through the Hung Te Charity Association in Yilan County. The Foundation provided scholarships to 43 students including 31 high school (vocational high school) students and 12 students studying in college or above in 2018.

## 社會公益活動

### Social and Charitable Events

捐助犯罪被害人（馨生人）保護協會的同馨專案，由保護志工以長期認輔的陪伴精神，主動安排每月一次到府訪視關懷，每次訪視由保護志工致贈慰問金代表分會關懷之意，抒解重傷者本人、家屬及經濟弱勢戶精神上之支持，並適時給予喘息空間與協助。捐助國軍退除役官兵輔導委員會桃園縣榮民服務處榮民遺孤認養運動。捐助新竹縣峨眉鄉峨眉國中學生獲邀赴日本參加宮崎音樂祭舞蹈交流活動的部份旅費，讓偏鄉孩子出國圓夢並拓展視野。

The Foundation made donations to the Tong Xin Project of the Association for Victims Support. Volunteers provide long-term services through companionship and actively arrange monthly visits to care for victims. The volunteers present gift money on each visit to express the branch association's care and provide mental support to victims, family members, and economically disadvantaged households and to provide relief and assistance. The Foundation made donations to the adoption of descendants of veterans event organized by the Taoyuan County Veterans Service Department of Veterans Affairs Council. The Foundation made donations to students of Emei Junior High School in Emei Township in Hsinchu County to sponsor part of their traveling expenses for participating in the Miyazaki International Music Festival which allowed children from remote areas to go abroad and expand their horizons.





2

# 活動報導

Activity Reports



## An illustration featuring a stylized hand placing a small green plant with two leaves onto a dark blue graduation cap. The cap is positioned on a stack of books with blue, green, and yellow spines. The background consists of soft, rolling green hills under a light green sky with small white stars. A large green circle is partially visible on the right edge.



- Taitung Fengtien Little League Team was first established in 2013. In addition to regular school curriculum, they receive baseball training and after-school assistance. The coaches and players enjoy close relationships and the team has grown from 5 members and 2 coaches to 41 members. The Foundation provides long-term funding for the team's daily operations and games in the country and in foreign countries.





- 2018 年豐田國小棒球隊  
團體照及感謝函  
Group photo and letter of  
gratitude from Fengtien  
Elementary School Baseball  
Team in 2018



- ▲ 美星教會受輔導的孩子，成績大幅進步  
Children under the tutorship of Meixing  
Church significantly improved their academic  
performance



- 基金會透過台灣行動菩薩助學協會協助彰化二林中興國小及芳苑育華國小開辦課後輔導課程，每學期約有 40 位學童參與此課程，學童的學習能力及課業成績大幅提升。

The Foundation provided after-school assistance to Zhongxing Elementary School of Erlin Township and Yuhua Elementary School of Fangyuan Township in Changhua County through Taiwan Action Buddha Society. Approximately 40 schoolchildren participate in the courses and their studies and academic performance have improved significantly.

- 基金會連續二年捐助美星教會在宜蘭縣三星鄉開設平日課後輔導課程及寒暑假品德教育課程，計劃參與人數每年成長，107 年已增到國小 21 名、國中 11 名、高中 6 名共 38 名。孩子有很大的進步，參加武術比賽獲得前三名，在課業上受輔導的孩子，成績也大幅進步，平均分數可達 90 分以上。

The Foundation has provided donations to Meixing Church for two consecutive years to open weekday after-school courses and ethical education during winter and summer vacations in Sanxing Township in Yilan County. The number of participants program has grown each year and the program provided services to 38 students in 2018 including 21 elementary school students, 11 junior high school students, and 6 senior high school students. The children achieved great progress and won top three prizes in martial arts contests. Children who received academic assistance also significantly improved their academic performance. Their average score became over 90.



- 基金會長期關注學童營養，長期捐助新北市萬里崁腳國小營養早餐計畫，照顧偏鄉孩童營養均衡，讓孩子獲得充足的營養，提升學習專注力。

The Foundation pays close attention to nutrition for schoolchildren and maintains long-term donations to the nutritious breakfast program for Kanjiao Elementary School in Wanli, New Taipei City to ensure that they receive balanced nutrition and obtain sufficient nutrients and to improve their focus in their studies.



#### ▲ 崁腳國小營養早餐

The nutritious breakfast program in Kanjiao Elementary School





- 基金會參與世展會『資助國內兒童計畫』及基督教芥菜種會助養活動，每月固定助養 30 餘名學子。

The Foundation participated in the World Vision Foundation's "Sponsor Domestic Children Program" and the Mustard Seed Mission's assistance programs by providing fixed donations to more than 30 children each month.



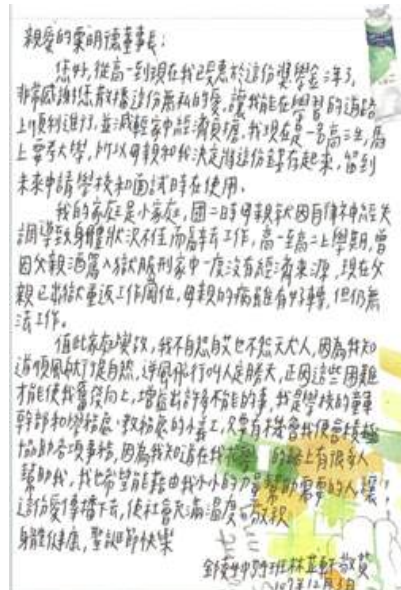
▲ 宜蘭縣弘德愛心協會發放宜蘭地區低收入子女獎助學金  
Yilan County Hung Te Charity Association distributes scholarships to low-income children in Yilan

- 基金會發放低收清寒學子獎助學金予金陵女中學生，及透過宜蘭縣弘德愛心協會發放宜蘭地區低收入子女獎助學金，共計有 40 餘位學子受益。

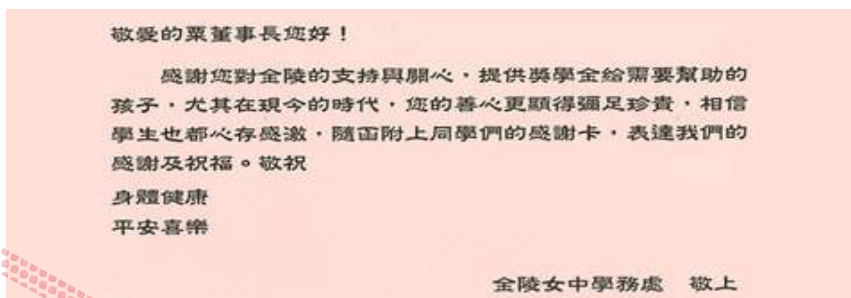
The Foundation distributed scholarships to students from poor households to students of Ginling Girls' High School and provides scholarships to students from low-income households in Yilan. More than 40 students received support in this program.







◀ 金陵女中學務處及學童感謝函  
Letter of Gratitude from Ginling Girls' High School Office of Academic Affairs and students





## 落實社區關懷 Implement Community Care

- 基金會成立後，有感於緊急救護醫療的重要，為協助各縣市政府消防單位能有效且直接地執行救災救護工作，提升救護品質，讓民眾的生命受到更多照顧持續捐助各縣市救護車，自基金會成立以來累計已捐贈救護暨接駁車輛數達 28 台。民國 107 年捐贈新竹縣消防局新埔分隊及湖口分隊平頂救護車。

After its establishment, the Foundation quickly discovered the importance of emergency medical services. The Foundation has donated 28 ambulances and shuttle vehicles to help fire departments of various counties and cities execute effective and direct disaster relief tasks and improve the quality of medical assistance and to help provide more care to people. The Foundation donated a regular ambulance to the Xinpu Branch and Hukou Branch of Hsinchu County Fire Bureau in 2018.



▲ 捐贈新竹縣消防局新埔分隊平頂救護車  
The Foundation donated a regular ambulance to the Xinpu Branch of Hsinchu County Fire Bureau







▲ 捐贈新竹縣消防局湖口分隊平頂救護車  
The Foundation donated a regular ambulance to the Hukou Branch of Hsinchu County Fire Bureau

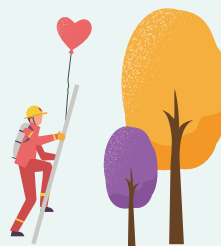






▲ 捐贈花蓮縣政府消防局豐濱分隊救災車

The Foundation donated a disaster relief vehicle to the Fengbin Branch of Hualien County Fire Department



- 花蓮縣豐濱鄉，距離花蓮市區約 60 分鐘車程，屬救災特殊區域，豐濱消防隊僅有一輛救護車改裝的救災車，用來撤離鄉民及平時消防救災使用，車齡逾 12 年，經常維修，為居民安全及救災效率，基金會捐贈救災車乙部。

Fengbin Township, Hualien County is approximately 60 minutes' car ride from Hualien City and it is a special region for disaster relief. Fengbin Fire Department only has one disaster relief vehicle that had been converted from an ambulance for use to evacuate residents and for disaster relief. The vehicle is more than 12 years old and often requires repairs. The Foundation donated one ambulance to protect residents' safety and improve disaster relief efficiency.



- 桃園市平鎮工業區敬鵬工業公司大火，延燒時間長達六十二小時，共動員 799 人次投入救災，此次火災消防人員遭機具壓住殉職、公傷，基金會捐贈 60 萬元供殉職及公傷人員家屬撫恤用。

The fire at Chin Poon Industrial in Pingzhen Industrial Park in Taoyuan City burned for 62 hours. 799 sorties of fire department personnel were assigned to disaster relief. Fire fighters were trapped under machinery and some were killed or suffered injuries. The Foundation donated NT\$600,000 as compensation for family members of the victims.



- 台灣路竹醫療和平會是一個非營利機構，以義診、宣導健康衛教觀念及人道關懷為宗旨，觸角從非洲、中南美洲，一路到亞洲。基金會長年支持台灣路竹會的義診活動，民國 107 年捐助和平會越南義診及雲南義診經費。

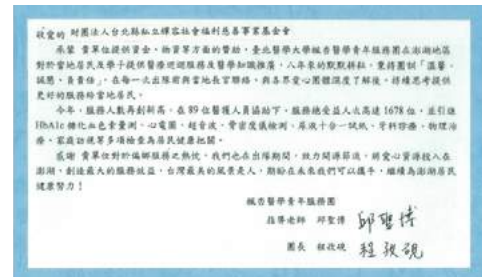
Taiwan Root Medical Peace Corps is a non-profit organization that provides voluntary medical services, promotes healthy education concepts, and humanitarian care from Africa and Central and South America all the way to Asia. The Foundation provides long-term support to Taiwan Root Medical Peace Corps' voluntary medical services and it made donations for the Peace Corps' voluntary medical services in Vietnam and Yunnan in 2018.





- 台北醫學大學楓杏醫學青年服務團為台北醫學大學的學生社團，服務團近年每到暑假 7~8 月間皆赴離島澎湖進行醫療暨醫學知識推廣服務，內容含蓋醫療巡迴、國小醫學體驗營及高中醫學知識計畫。基金會自民國 100 年起每年贊助該服務團澎湖義診計畫，支持青年為社會貢獻服務並讓離島居民也能享有醫療服務及吸收醫學知識。

Taipei Medical University Hospital Feng Hsin Medical Youth Service Group is a student club of Taipei Medical University. The Service Group provides voluntary medical services and healthcare and health science promotion services in Penghu in July to August during summer vacation every year. The event included medical service tours, medical experience camps in elementary schools, and medical knowledge programs for high schools. The Foundation also supports the Service Group's voluntary medical service plan since 2011 to support youths' social contribution and provide residents on offshore islands with medical services and medical knowledge.



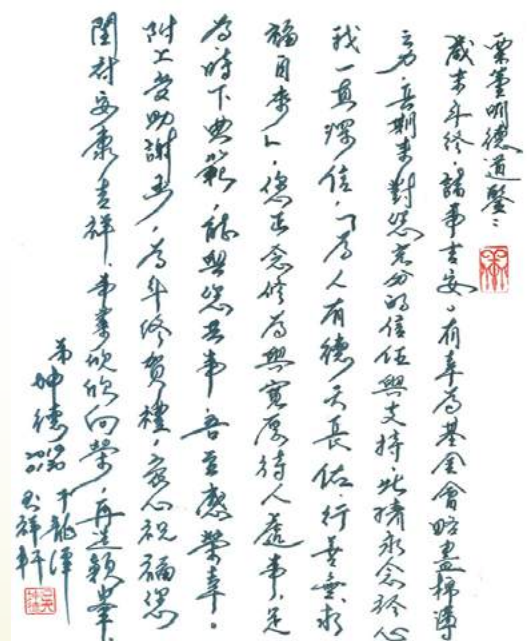
▲ 台北醫學大學楓杏醫學青年服務團澎湖服務隊  
Taipei Medical University Hospital Feng Hsin Medical Youth Service Group's Penghu Service Team

- 實地深入桃竹苗、新竹尖石、南投信義...等偏遠鄉鎮或政府單位未能及之個案，由專人執行評估並予以伸援，民國 107 年此項協助個案總數 118 件，總捐助金額約 276 萬元。

The Foundation ventured into remote regions in Taoyuan, Hsinchu, and Miaoli, Jianshi in Hsinchu, and Xinyi in Nantou to provide assistance to individuals that could not receive support from government institutions. The Foundation assigned dedicated personnel to evaluate and extend support. The Foundation provided assistance in 118 individual cases and total donations amounted to approximately NT\$2.76 million in 2018.

► 吳坤德執行長親函向葉董事長致謝

CEO Kun-Te Wu's Letter of Gratitude to Chairman Mr. Alexander, M.T. Su







## 建立醫療急救設施 Establishment of Emergency Medical Equipment

- 恆春醫院是恆春當地唯一的醫院，醫院內的精密醫療儀器不足，常因無儀器檢驗檢體，而延誤居民診療，基金會在 107 年捐贈一台『血液氣體分析儀』，快速篩檢新生兒之檢體，讓新生兒疾病得到快速的診療。

Hengchun Hospital is the only hospital in Hengchun. The hospital lacks precision medical equipment and often causes delays in residents' medical treatment due to shortage of equipment for examining samples. The Foundation donated a "blood gas analyzer" in 2018 to quickly screen samples taken from newborns so that newborn diseases can be quickly treated.



▲ 黃疸測定儀  
Jaundice detector



▲ X 光放射防護鉛衣及鉛頸圈  
X-ray radiation lead shielding gear and lead thyroid collar





- 全台東將近一半以上的新生兒在台東基督教醫院接生，新生兒黃疸檢測為必要性檢查；台東基督教醫院每年手術約計有 493 次手術需使用 X 光輔助，而鉛衣及鉛頸圈組為手術室保護醫護人員使用 X 光輔助開刀時，放射防護之重要器材。基金會在 107 年捐贈黃疸測定儀及鉛衣及鉛頸圈予台東基督教醫院。

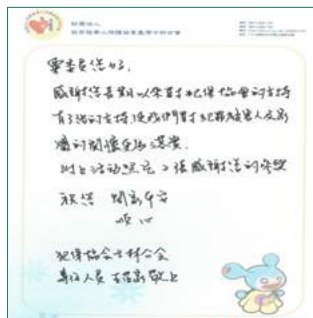
More than half of all newborns are delivered in Taitung Christian Hospital and jaundice examination is a necessary inspection for newborns. X-ray assistance is required in approximately 493 surgeries in Taitung Christian Hospital each year. Lead shielding gear and lead thyroid collar sets are important equipment for protecting medical personnel in surgery rooms when they use X-ray in image-guided surgeries. The Foundation donated a jaundice detector and a radioactive lead shielding gear and lead thyroid collar set to Taitung Christian Hospital in 2018.



## 其他 Others

- 支持犯罪被害人保護協會士林分會發起關懷犯罪被害人（馨生人）的同馨專案，規畫保護志工以長期認輔的陪伴精神，主動安排每月一次到府訪視關懷，每次訪視由保護志工致贈慰問金代表分會關懷之意，抒解重傷者本人、家屬及經濟弱勢戶精神上之支持，並適時給予喘息空間與協助。

The Foundation supports the Tong Xin Project which was launched by the Shihlin Branch of the Association for Victims Support. Volunteers provide long-term services through companionship and actively arrange monthly visits to care for victims. The volunteers present gift money on each visit to express the branch association's care and provide mental support to victims, family members, and economically disadvantaged households and to provide relief and assistance.



- 新竹縣峨眉鄉峨眉國中學生完全沒有舞蹈基礎，卻連續兩年，代表新竹縣參加全國舞蹈比賽榮獲優等，民國 107 年 4 月獲邀赴日本參加宮崎音樂祭舞蹈交流活動，表演無碼「台灣味」，基金會捐助部份旅費，讓偏鄉孩子出國圓夢並拓展視野。

Students of Emei Junior High School in Emei Township in Hsinchu County have absolutely no basic training in dancing but they have represented Hsinchu County in the national dance contest and won excellence awards for two consecutive years. They were invited to the Miyazaki International Music Festival in April 2018 to give a performance of "A Taste of Taiwan". The Foundation sponsored part of the traveling expenses and allowed children from remote areas to go abroad and expand their horizons.



- 基金會擔任台灣癲癇之友協會「聚集不一樣，成就大力量；超越癲癇，精彩生命」音樂會的協辦者，聚集有音樂才藝的身心障礙者、癲癇朋友及他們的子女共同參與表演。透過此次音樂會，讓社會大眾明瞭，身心障礙、癲癇朋友同樣可以有傑出的表現，不會因為身心障礙、癲癇而被擊退，他們可以追求幸福的婚姻及延續下一代，「超越癲癇，生命傳承」是該音樂會的核心主題，激勵身心障礙及癲癇朋友們，以積極進取的精神，將「阻力」轉化成「動力」，找到讓自己發光發熱的人生。

The Foundation co-sponsored the Taiwan Epilepsy Association's "Assemble Uniqueness to Achieve Power Overcome Epilepsy and Live Exciting Lives" concert. The event gathered disabled people with musical talents, people suffering from epilepsy, and their children in a joint performance. The musical let the general public understand that disabled people and people suffering from epilepsy can also achieve great performance and will not be discouraged by their disabilities or epilepsy. They can pursue happy marriages and give birth to children. "Overcoming epilepsy and pass on life" was the core theme of the concert which encouraged the disabled people and people suffering from epilepsy to adopt a positive attitude by transforming obstacles into power and live exciting lives.



▲ 台北愛樂四重奏  
Taipei Philharmonic Orchestra Quartet



▲ 沖繩樂坊  
Okinawa Music Workshop



- ▲ 「聚集不一樣，成就大力量；超越癲癇，精彩生命」音樂會實景  
"Assemble Uniqueness to Achieve Power Overcome Epilepsy and Live Exciting Lives" concert
- ◀ 「聚集不一樣，成就大力量；超越癲癇，精彩生命」音樂會海報  
"Assemble Uniqueness to Achieve Power Overcome Epilepsy and Live Exciting Lives" concert poster



# 3 年報數據

## Income and Expenditure Statistics





## 新光鋼添澄慈善基金會 Hsin Kuang Steel Tian-Cheng Charity Foundation

### ● 107 年經費運用情形及歷年支出報告 2018 Income and Expenditure Report and Historical Spending

107 年收入部份 Income for 2018	
項目 Item	金額 (新臺幣元) Amount (NTD)
利息收入 Interest income	43,460
捐贈收入 Donation income	4,536,000
合計 Total	4,579,460

107 年支出部份 Expenditure for 2018	
項目 Item	金額 (新臺幣元) Amount (NTD)
兒童福利 Children's welfare	639,403
青少年福利 Youth welfare	94,485
老人福利 Elderly welfare	70,000
身心障礙福利 Physically mentally challenged welfare	544,134
急難救助 Emergency aid	4,474,000
清寒、低收入補助 Subsidies for the economically challenged and low-income households	100,000
醫療補助 Medical subsidies	720,500
行政業務費 - 事務費 Administrative expenses - office expenses	125,413
合計 Total	6,767,935



歷年支出部份 Historical Spending	
年度 Year	金額 (新臺幣元) Amount (NTD)
98~102 2009 - 2013	19,818,932
103~106 2014 - 2017	12,847,551
107 2018	6,767,935
合計 Total	39,434,418

## 台北縣私立輝容社會福利慈善事業基金會 Taipei County Private Hui Jung Welfare and Charity Foundation

### ● 107 年經費運用情形及歷年支出報告 2018 Income and Expenditure Report and Historical Spending

107 年收入部份 Income for 2018	
項目 Item	金額 (新臺幣元) Amount (NTD)
股息收入 Dividend income	5,865,761
售股收入 Stock sales income	11,088,846
利息收入 Interest income	112,188
捐贈收入 Donation income	12,119,204
合計 Total	29,185,999





### 107 年支出部份 Expenditure for 2018

項目 Item	金額 (新臺幣元) Amount (NTD)
兒童福利 Children's welfare	1,179,580
身心障礙福利 Physically mentally challenged welfare	731,700
急難救助 Emergency aid	2,866,000
低收入補助 Subsidies for low-income households	200,000
緊急救護、醫療補助 Emergency medical assistance and medical subsidies	2,880,000
獎助學金 Scholarships	775,000
社會公益活動 Social and charitable events	547,000
合計 Total	9,179,280

### 歷年捐助支出 Historical Spending

年度 Year	金額 (新臺幣元) Amount (NTD)
93 ~ 97 2004 - 2008	18,103,000
98 ~ 102 2009 - 2013	35,327,840
103 ~ 106 2014 - 2017	25,468,100
107 2018	9,179,280
合計 Total	88,078,220



4

展望

Prospects





新光鋼鐵股份有限公司長年以「新光鋼添澄慈善基金會」及栗明德董事長以「台北縣私立輝容社會福利慈善事業基金會」參與社會慈善公益及關懷兒少弱勢活動。

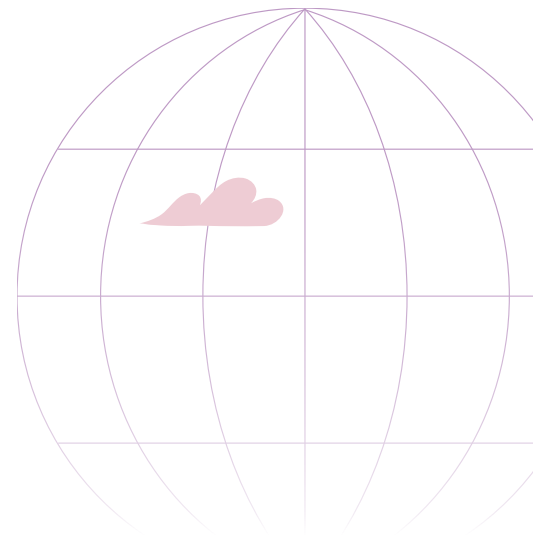
深感國家未來能夠壯大發展，必需在教育上扎根，人才的培育為首要之務；為培育菁英學生成為優秀人才，期待其未來能肩負起帶動國家社會向上提升的領頭羊角色，新光鋼鐵公司在未來的公益活動上，將在卓越獎助計劃領域增加比重。

展望未來，新光鋼鐵及基金會除在目前兒童福利、身心障礙福利及急難救助等扶助弱勢的領域持續付出外，將提高在教育文化及獎勵人才領域的支出比重，期待藉由人才培育計劃的深耕廣耘，為台灣開創未來發展的新可能性，不論在科技、金融還是在服務等領域上，都期待有更耳目一新的改變及提升，唯有人人都好，國家社會才會更好。

Hsin Kuang Steel Co., Ltd. participates in charities and care for children and disadvantaged groups through Hsin Kuang Steel Tian-Cheng Charity Foundation and Chairman Alexander M.T.Su does the same through "Taipei County Private Hui Jung Welfare and Charity Foundation".

A solid education system and talent cultivation are of the utmost importance in the future growth and prosperity of the country. To train elite students into outstanding talents for the country and encourage to take on leadership roles in the country and society in the future, Hsin Kuang Steel shall increase the proportion of its support in sponsorship programs for excellence in future charity events.

In the future, Hsin Kuang Steel and the Foundation shall continue to contribute to children welfare, disabilities welfare, disaster relief, and other disadvantaged groups and we shall increase the proportion of our expenditures in education, culture, and incentives for talents in hopes of using the depth and reach of talent cultivation programs to open up new possibilities for future development of Taiwan. We aim to achieve change and improvement in technology, finance, and services. The country and society will only improve if we let everyone improve.





新光鋼鐵股份有限公司  
HSIN KUANG STEEL CO., LTD.

